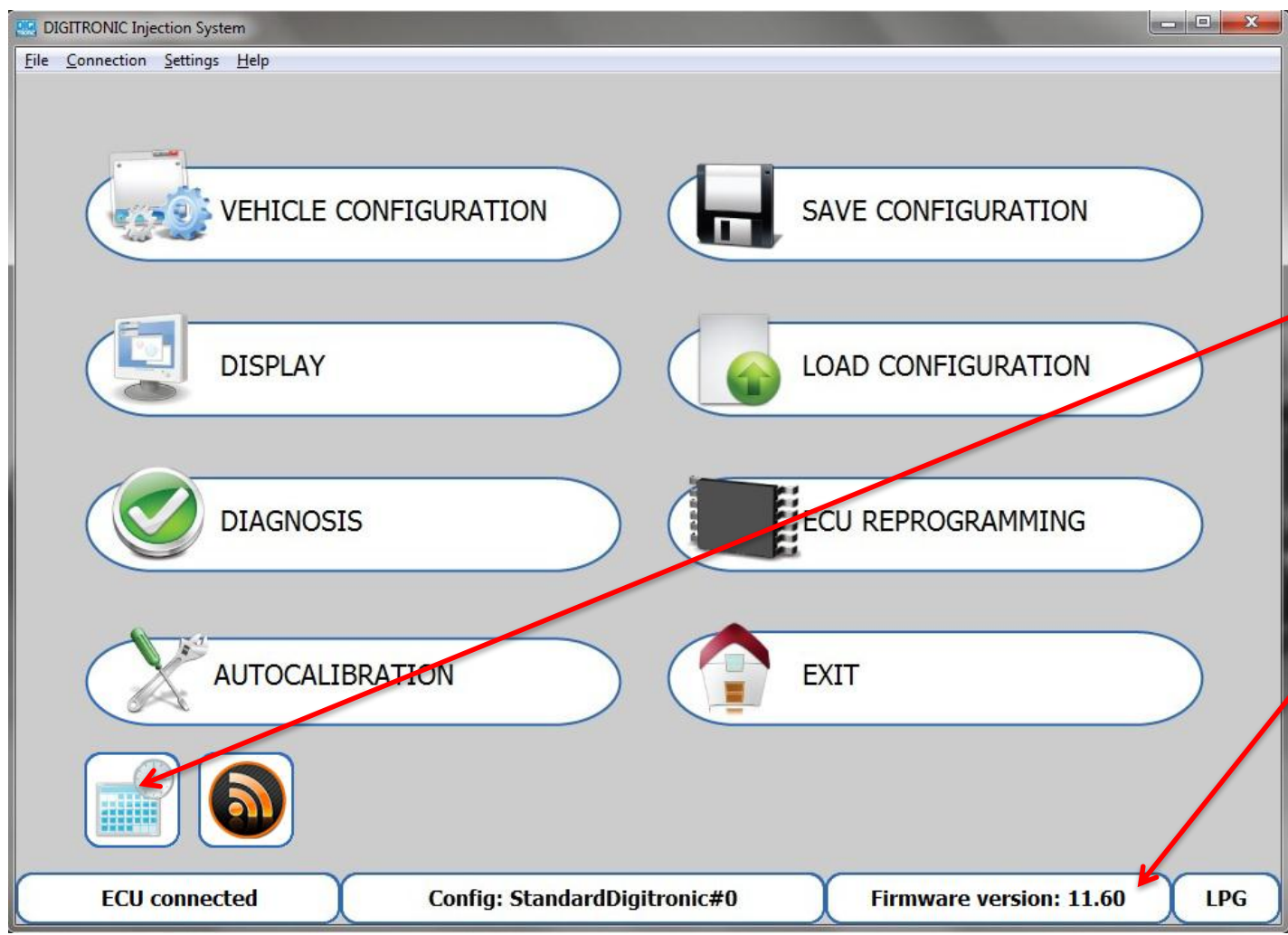
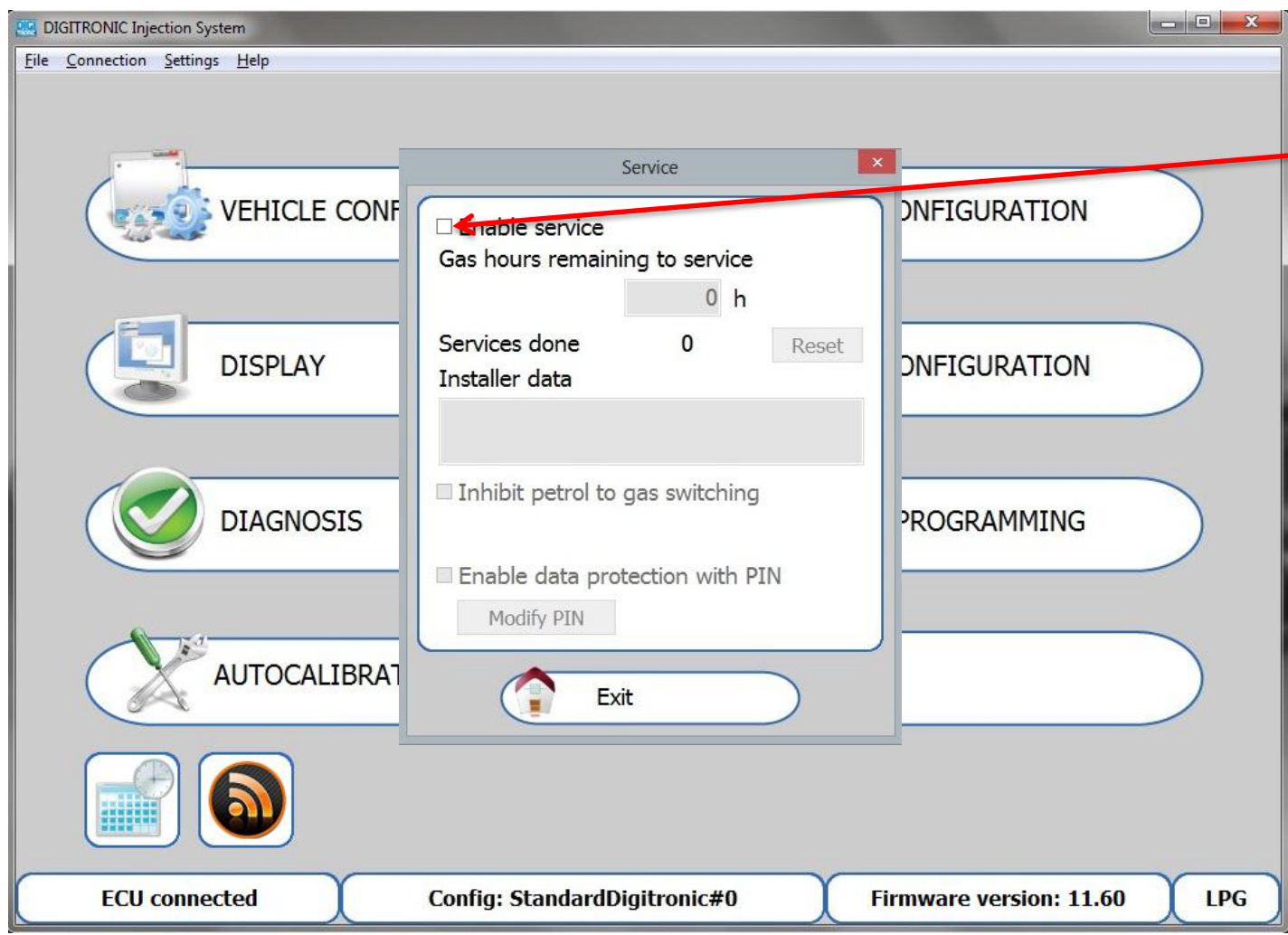


1. Connect the ECU via Digitronic USB Interface to the Laptop
2. Start the Digitronic software on the Laptop
3. Click here



Here you can see the actual ECU Firmware if the ECU is connected properly

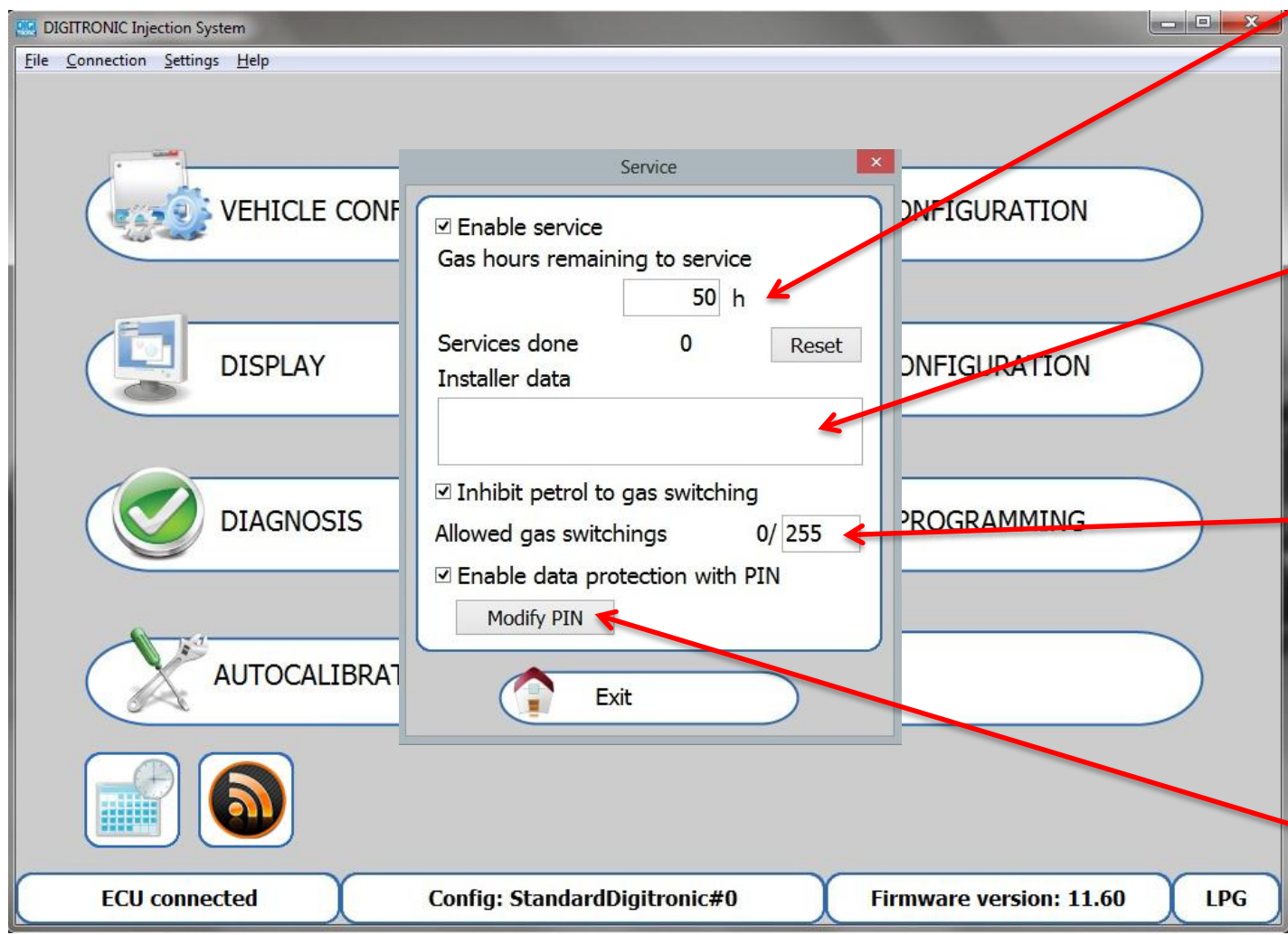




4. The „Service” Window will appear

5. Click here to Enable service





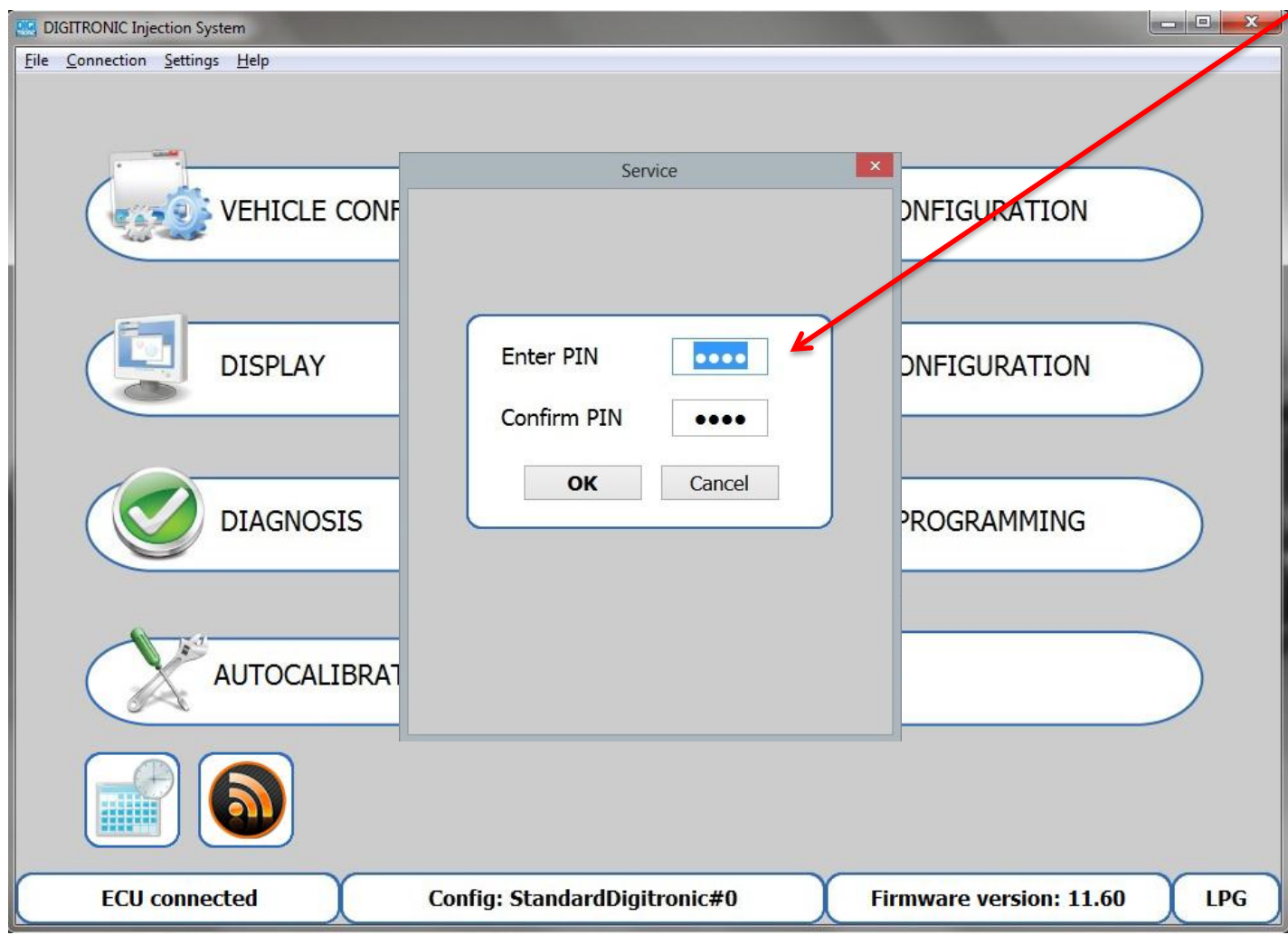
6. Here you can set hours the car will be running on Gas before the petrol to gas switching will be inhibited

7. Here the Installer can make notes.  
For example: „ Gas Filter changed at 45 000 km”

8. Here you can set the numbers of switchings to gas the ECU will allow after „Gas hours remaining to service” gets to „0 h” – 255 = infinite

9. Click here to „Lock” the ECU with a PIN





10. Now you can set a PIN and click „OK”

**!!! WARNING !!!**  
**Memorise and safe the PIN**  
**After the PIN is confirmed you will have to enter it each time you enter the setup or you need to extend the „Gas hours remaining to service”**  
**Unlocking the ECU without the PIN is only possible at a Digitronic facility.**  
**Additional fees will be applied for this service.**

